A large, faint, light blue graphic of a water wheel is positioned in the background, centered behind the text. The wheel has multiple spokes radiating from a central hub to the outer rim. The text is overlaid on the right side of the wheel.

Case Study - Bagtor House

*Domestic micro-hydro
installation*

55m head

ern Renewable Energy

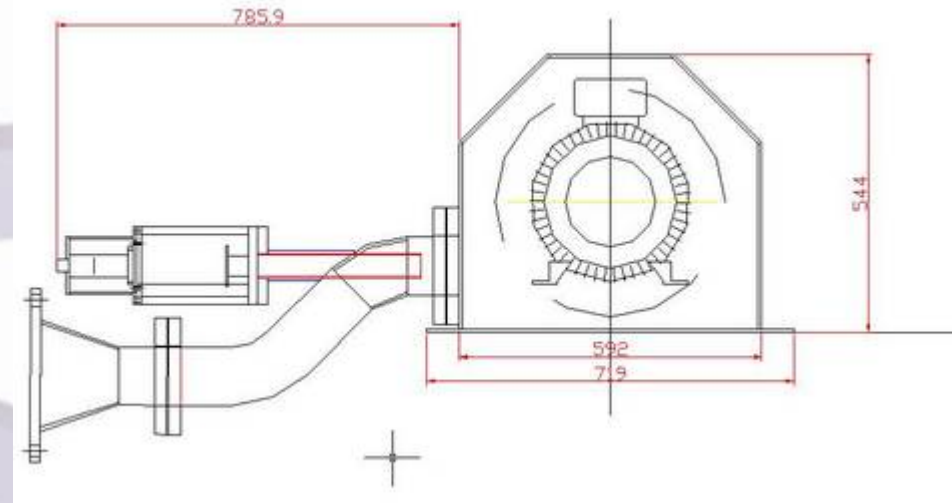
Case Study:

Site: Bagtor House
Turbine: Single Jet Pelton
Power: 5.5kW
Head: 55m

Western Renewable Energy (WRE)
carried out work from feasibility
forward to commissioning

Site specific issues include:

- High head – 55m
- Small flow
- Pipe route through stony woodland
- System a rebuild of an old system



As the catchment was small physical measurement was carried out in addition to computer analysis. Existing derelict powerhouse and intake tank to be repaired and reused



New pipeline installed following old route where possible, using fusion welded plastic pipe



Pelton turbine



WRE coanda screen

